

Södertälje, April 10th 2014
Scania C.V. AB
SE-151 87 Södertälje

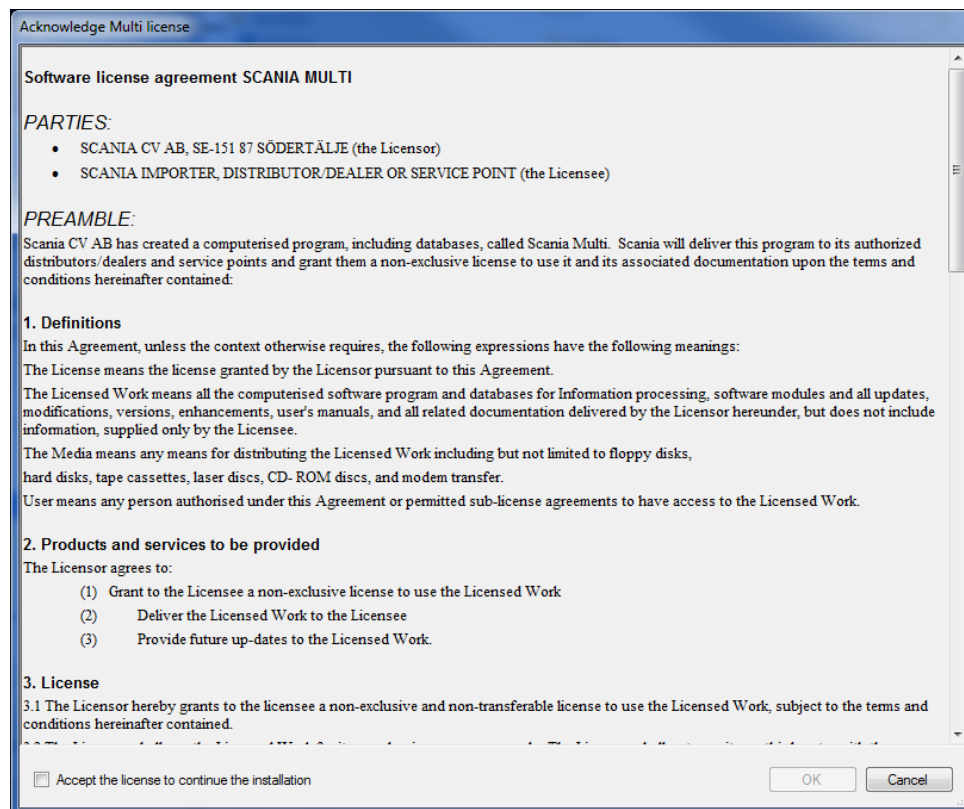
INSTRUCTION AND GENERAL INFORMATION FOR MULTI INSTALLATION

This is a completely new installation program for Scania Multi.

A new feature is that each DVD is a separate and complete installation. But DVD 1 must still be installed completely before DVD 2.

NB. The installation is a time consuming process and could take up to 1 hour per DVD, depending on hardware etc.

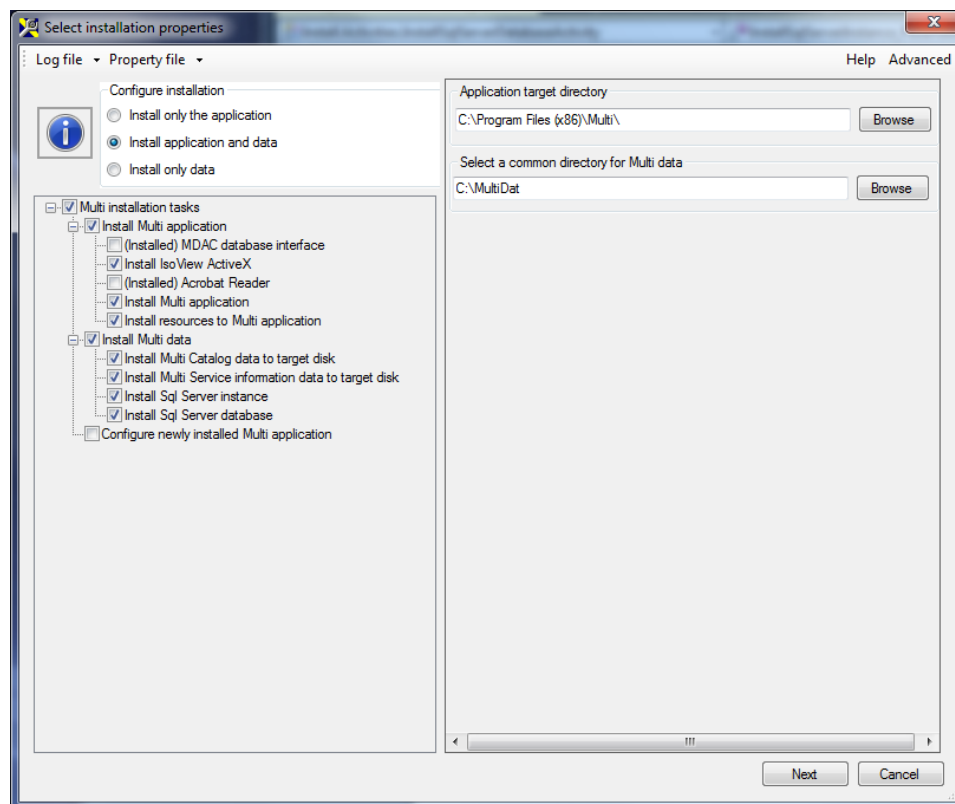
Installation of DVD 1



- The first dialog is recognizable from the earlier installation programs. Just read the terms and if you accept them, click in the tick box and the click "OK" to initiate the installation.

The installation dialog.

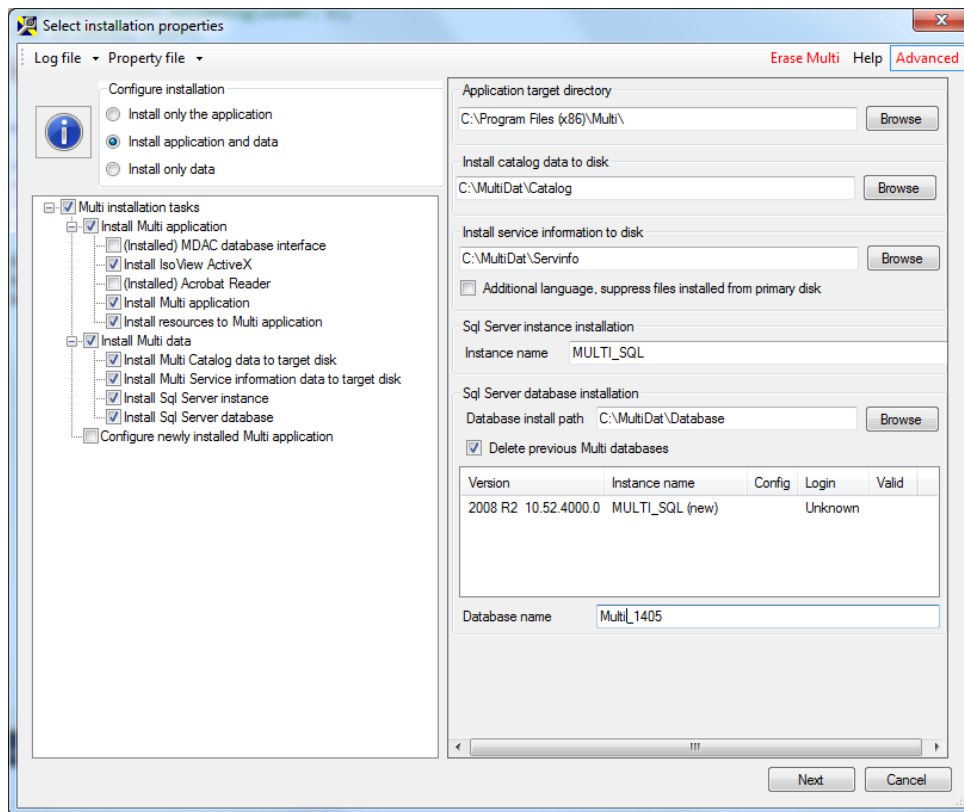
- To clarify a few things that might look strange in the installation dialog, see explanation below the illustration.



- Some checkboxes are ticked and some are not. This is because the installation program detects already installed components, in this case MDAC (system component). This also applies for IsoView, Adobe Reader.
- This is the easy way to install Multi.

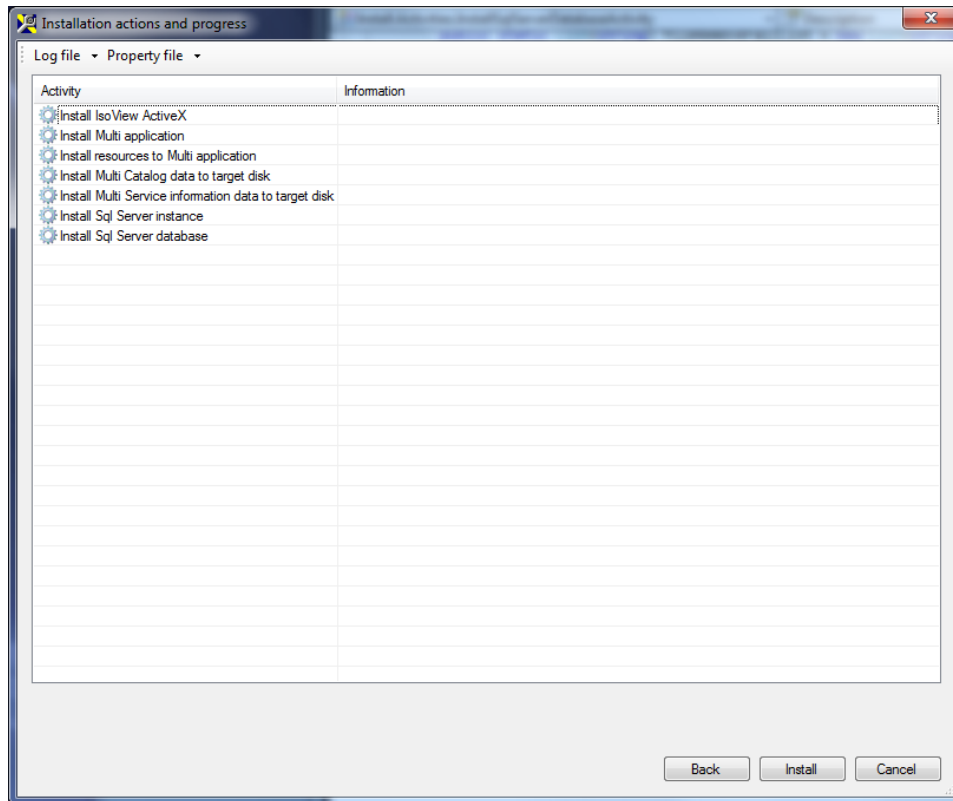
Advanced installation dialog.

If there is a need to untick one or more of the tick boxes, see illustration below



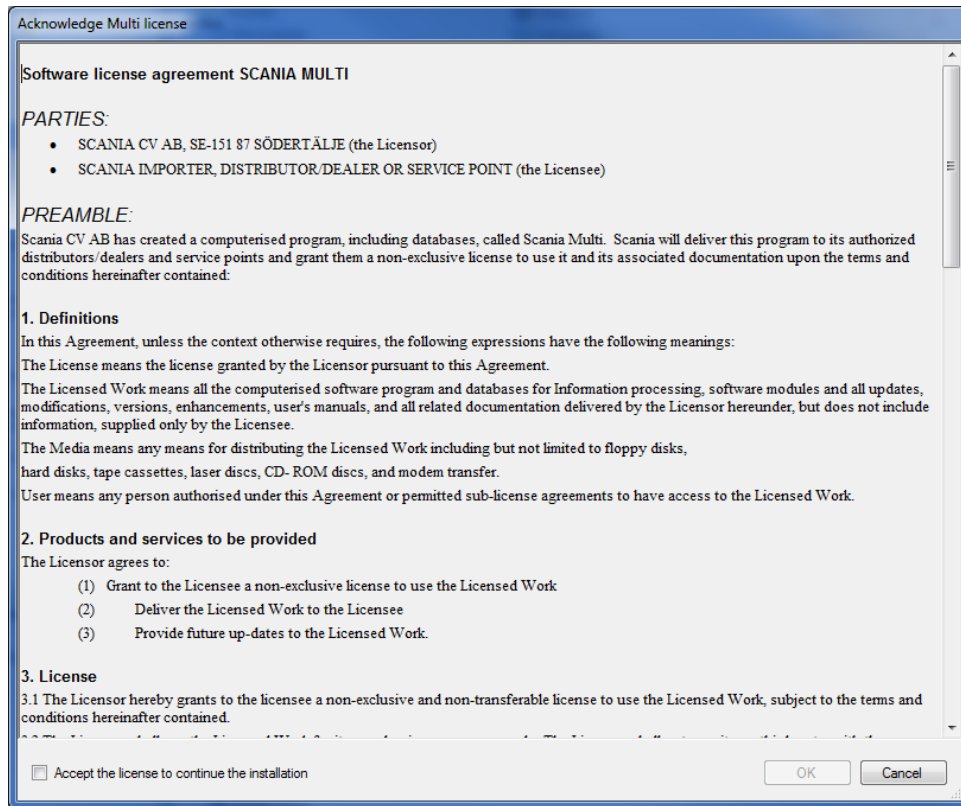
Click on the button named "Advanced". Now it is possible to tick and untick different choices.

Installation progress dialog, DVD 1.



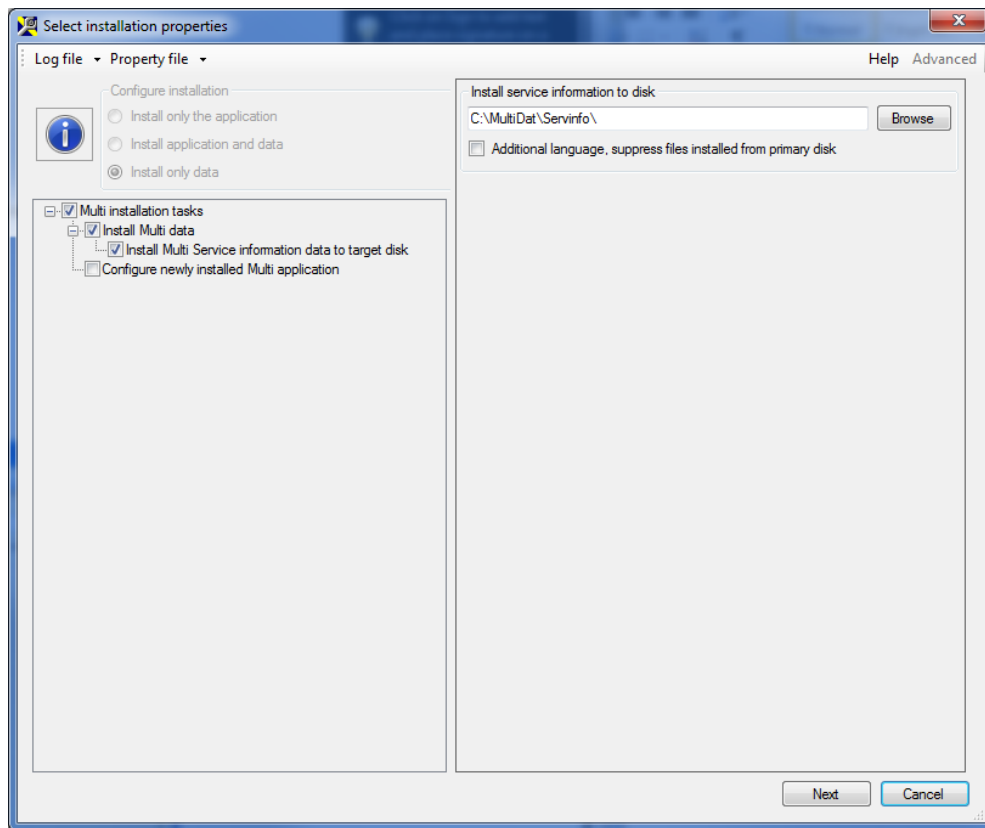
This information dialog will be shown on screen until the installation is complete. The symbols will change when the particular part of the installation is completed.

Installation of DVD 2. (The following pages applies only to the installation of Multi Authorized and Multi Service)



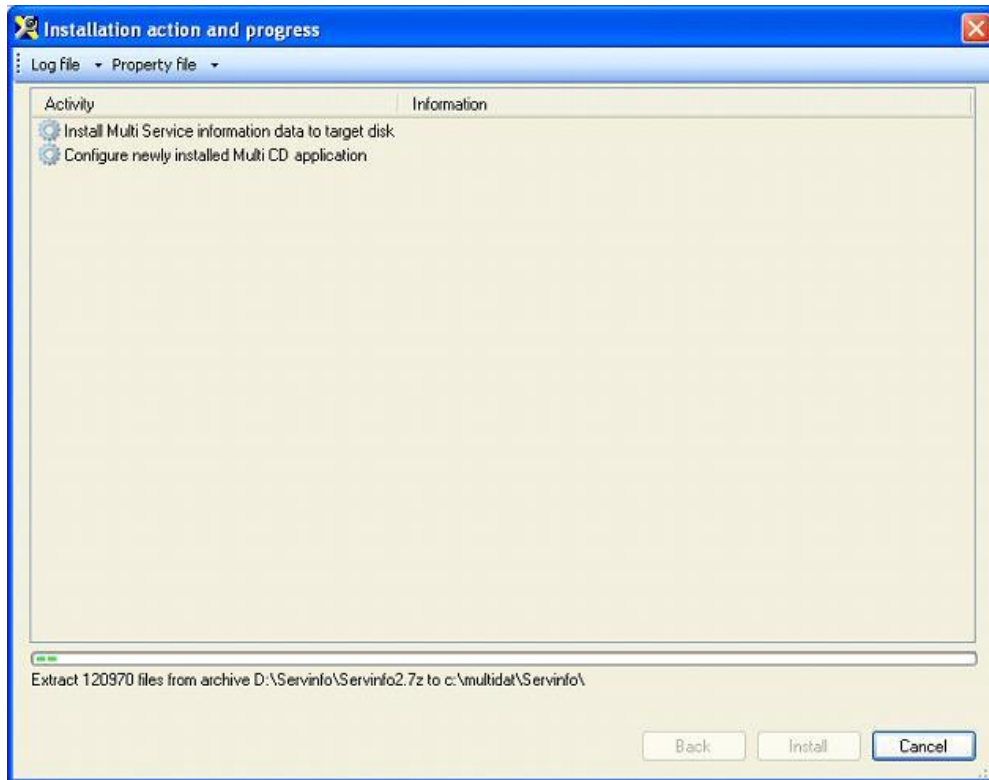
The installation of DVD 2 starts in exactly the same way as the DVD 1 installation. You have to click in the tick box and the "OK" to initiate the installation of DVD 2.

The installation dialog for DVD2.



The installation dialog for DVD 2 only shows what can be installed from that disc.

Installation progress dialog, DVD 2.



This information dialog will be shown on screen until the installation is complete. The symbols will change when the particular part of the installation is completed.